

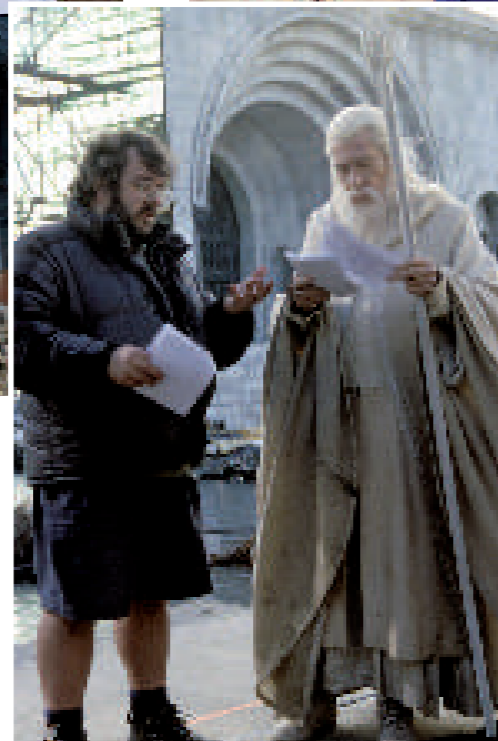
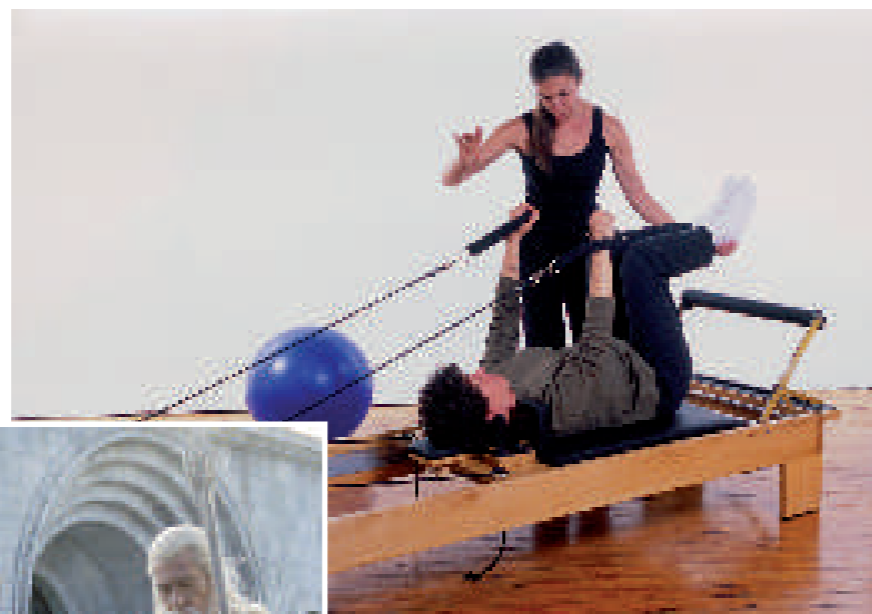
Speaking:

CAE Part 3

Collaborative task

Here are some pictures showing people in different kinds of relationships. Talk with your partner about the ways in which the two people in each relationship depend on each other. Then decide which two people depend on each other the most.

- In what ways do the two people in each relationship depend on each other?
- Which two people depend on each other the most?



Speaking:

CAE Part 4

Further discussion

Discuss the following questions.

- What other pairs of people are heavily dependent on one another?
- What makes someone a good friend?
- How far do you agree that older generations have more to teach young people than the other way round?
- What are the advantages and disadvantages of working closely with the same person for a long time?
- Some people prefer to spend time socializing with colleagues or friends, rather than their family. How about you?

How to go about it

- Give full answers to the questions, justifying your opinions. Remember, it is your language which is being assessed and not your ideas.
- Respond to what your partner says, as in Part 3, and develop the discussion.

Listening 2:

CAE Part 1

Multiple choice

8 You are going to hear three different extracts. For questions 1–6, choose the answer (A, B or C) which fits best according to what you hear. There are two questions for each extract.

What to expect in the exam

- In Part 1 of the Listening Paper, the three extracts are all on different themes. However, for the task you are about to do, the extracts are all on the same theme of relationships.

Extract One

You will hear part of an interview with an actress called Miriam Landers talking about a director she has worked with.

- 1 How does Miriam feel about acting in her new play?
 - A She is nervous about the first night of the production.
 - B She feels certain her performance will be convincing.
 - C She is concerned that it will leave her feeling very tired.
- 2 What does Miriam say about her relationship with her director, Malcolm Rush?
 - A He makes all the important decisions.
 - B He always finds something to criticize.
 - C He is willing to listen to her suggestions.

Extract Two

You will hear two people on a film review programme talking about a new movie.

- 3 What do the two speakers agree about?
 - A All the actors give very good performances.
 - B The special effects are better than in similar films.
 - C The relationship between the two characters is unoriginal.
- 4 What does the man say is true at the end of the film?
 - A The detectives dislike each other.
 - B The detectives do not trust each other.
 - C The detectives decide to continue their partnership.

Extract Three

You will hear part of an interview with a professional rally driver.

- 5 What is worrying the driver about his next race?
 - A the fact that he has a new co-driver
 - B the possibility that he may lose control of the car
 - C the risk of the car having engine failure
- 6 What does he say about the role of the co-driver?
 - A A co-driver is supposed to keep the driver calm.
 - B People do not appreciate what the co-driver does.
 - C It is the co-driver's fault when accidents occur.

