

U n i t

10

The Environment

WARM-UP



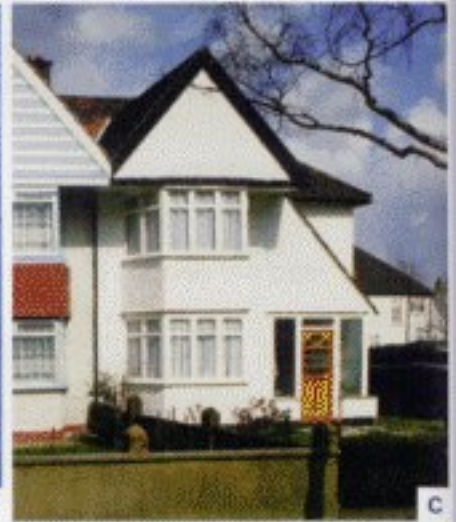
Look at the pictures. Match them with the types of housing below.  
Now, in pairs, discuss which of these you would prefer to live in. Give reasons for your choice.



A



B



C



D



E

flat \_\_\_\_\_ detached house \_\_\_\_\_ terraced house \_\_\_\_\_ bungalow \_\_\_\_\_ semi-detached house \_\_\_\_\_

DEVELOP YOUR SPEAKING SKILLS

A

*Dos and Don'ts*

Which of these are good things for a candidate to say or do in Speaking Part 2?  
Which of them are not so good? Write **Do** or **Don't** before each one.

If you are not sure exactly what the picture is, ...

- |                                    |   |
|------------------------------------|---|
| 1 _____ panic.                     | 4 _____ say that you can't do the task.                           |
| 2 _____ stop talking.              | 5 _____ use words and phrases that express doubt and possibility. |
| 3 _____ say that you are not sure. | 6 _____ give reasons when you express your opinion.               |



**B Listen and tick or cross** 


You're going to hear two students talking about a photograph in Part 2. They are unsure exactly what the photo is, and they express their uncertainty. Which of these words and phrases do they use? Listen and tick the ones you hear.

**Student 1**

- 1 It must be ... \_\_\_\_\_
- 2 It may be ... \_\_\_\_\_
- 3 I think ... \_\_\_\_\_
- 4 I believe ... \_\_\_\_\_
- 5 probably \_\_\_\_\_
- 6 definitely \_\_\_\_\_
- 7 maybe \_\_\_\_\_
- 8 I hope that ... \_\_\_\_\_
- 9 I don't really understand ... \_\_\_\_\_

**Student 2**

- 1 maybe \_\_\_\_\_
- 2 I may be ... \_\_\_\_\_
- 3 It might be ... \_\_\_\_\_
- 4 I know ... \_\_\_\_\_
- 5 I think ... \_\_\_\_\_
- 6 I can't tell you if ... \_\_\_\_\_
- 7 I can't really understand if ... \_\_\_\_\_

**C Listen and write** 

Now listen again. Each student uses one other good phrase for expressing uncertainty. Write their phrases on the lines provided.

**Student 1** \_\_\_\_\_

**Student 2** \_\_\_\_\_

**D What are they used for?**

Here are some more words and phrases you could use in Speaking Part 2. Write each one in its correct box. The words and phrases already in the boxes are from the previous exercises.

- |                          |                                 |                                      |
|--------------------------|---------------------------------|--------------------------------------|
| It can't be ...          | Judging from ...                | I'm not really/totally sure, but ... |
| I would imagine that ... | It's not clear ...              | It has to be ...                     |
| It could be ...          | It's difficult to tell, but ... | It's quite likely that ...           |
| I guess that ...         |                                 |                                      |

**Expressing uncertainty**

- I can't really make out ...
- \_\_\_\_\_
- \_\_\_\_\_
- \_\_\_\_\_

**Expressing possibility**

- It may be ...
- It might be ...
- probably
- maybe
- I think ...
- I suppose that ...
- \_\_\_\_\_
- \_\_\_\_\_
- \_\_\_\_\_

**Expressing certainty**

- It must be
- definitely
- \_\_\_\_\_
- \_\_\_\_\_



DEVELOP YOUR SPEAKING SKILLS

**E**

**Look and make notes**

Look at these two photographs, and make notes on the lines provided to answer the questions.

**Picture A**

- 1 What is this a picture of?  
\_\_\_\_\_
- 2 What are the two or three most important things in the picture?  
\_\_\_\_\_
- 3 Can we tell if it's a town or a city? \_\_\_\_\_
- 4 Which do you think it is? Why?  
\_\_\_\_\_
- 5 Do you think it's a town/city in your country? \_\_\_\_\_
- 6 Why/Why not? \_\_\_\_\_
- 7 Do you like this place? \_\_\_\_\_
- 8 Why/Why not? \_\_\_\_\_



**Picture B**

- 1 What is this a picture of?  
\_\_\_\_\_
- 2 What are the two or three most important things in this photo?  
\_\_\_\_\_
- 3 Where do you think the photo was taken? \_\_\_\_\_
- 4 Why? \_\_\_\_\_
- 5 Do you like this place? \_\_\_\_\_
- 6 Why/Why not? \_\_\_\_\_



# Wordperfect

## Both pictures

- 1 What is the main difference between the pictures?  
\_\_\_\_\_
- 2 Which place would you prefer to visit?  
\_\_\_\_\_
- 3 Why? \_\_\_\_\_

## F

### Compare and contrast

In pairs, look at the photographs again and practise comparing and contrasting using the useful phrases in D, and your notes in E. One of you should read the examiner's words and then listen. When you have finished, swap roles.

Here are two pictures of different places. I'd like you to compare and contrast these pictures, saying which place you would prefer to visit, and why. Remember you only have one minute for this.



Read these sentences and then use the words in bold to complete the sentences below.

- It's very peaceful in the **country(side)**, but there aren't as many facilities as in the town.
  - We went to a **safari park** last week. It's much better than a zoo as the animals have plenty of room to roam around.
  - The government has decided to **ban** fox hunting. They believe it's cruel and unnecessary.
  - We should think of the Earth as a large **eco-system**. All the animals and plants depend on each other.
  - If the **rainforests** are all destroyed, millions of different types of insect will become extinct.
  - Are cars that take **diesel** more environmentally-friendly than cars that take petrol?
  - This newspaper is printed on **recycled** paper.
  - Too many factories dispose of their **waste** by pumping it into rivers and the sea.
  - **CFCs** are the chemicals responsible for much of the damage to the ozone layer.
  - Individuals can't solve the world's environmental problems on their own; governments and **industry** must change too.
- 1 Make sure your deodorant doesn't contain harmful \_\_\_\_\_; you don't want to increase the size of the hole of the ozone layer!
  - 2 Could you fill the tank up with \_\_\_\_\_, please?
  - 3 They're going to \_\_\_\_\_ cars from the city centre in an attempt to reduce pollution from exhaust fumes.
  - 4 We should all try to reduce household \_\_\_\_\_ by taking all our glass, paper and plastic to recycling bins.
  - 5 Once you enter the \_\_\_\_\_, do not get out of your cars. The animals are dangerous.
  - 6 The whole \_\_\_\_\_ of the region was changed when the airport was built. Most of the wild birds have completely disappeared.
  - 7 We've decided to move to the \_\_\_\_\_ as it's a much safer place to bring up small children.
  - 8 The \_\_\_\_\_ are so far away that it's difficult for us in the West to see the damage.
  - 9 Many people who work in \_\_\_\_\_ are trying hard to make their companies more environmentally aware and responsible.
  - 10 This \_\_\_\_\_ glass is just as good as brand-new glass.



**EXAM PRACTICE — SPEAKING PARTS 1 AND 2**

*Exam know-how*

When you do Speaking Part 2:

- Try not to say 'I can see ...' when you are talking about the photos. It sounds much more natural if you say 'There's ...' or 'There are ...'
- Remember that you will not lose marks if you say you're not sure about something. On the contrary, you will impress the examiner with your ability to express your uncertainty.

**A**

*Part 1*



3 min

We'd like to know something about you, so I'm going to ask you some questions about yourselves.

- How long have you lived there?
- What are the worst things about living there?
- Is there anything you would change about where you live?
- What would you change about your home?
- What are the best things about living there?
- Would you prefer to live somewhere else? Why/why not?
- What kind of building do you live in?
- Do you live in the town or the countryside?
- How environmentally-friendly are you?

**B**

*Part 2*



1 min

Photos for Candidate A:



Candidate A, I'd like you to compare and contrast these pictures, saying how you think the people in the pictures feel.

Candidate B, how would you feel if you were in these situations?



20 SECS

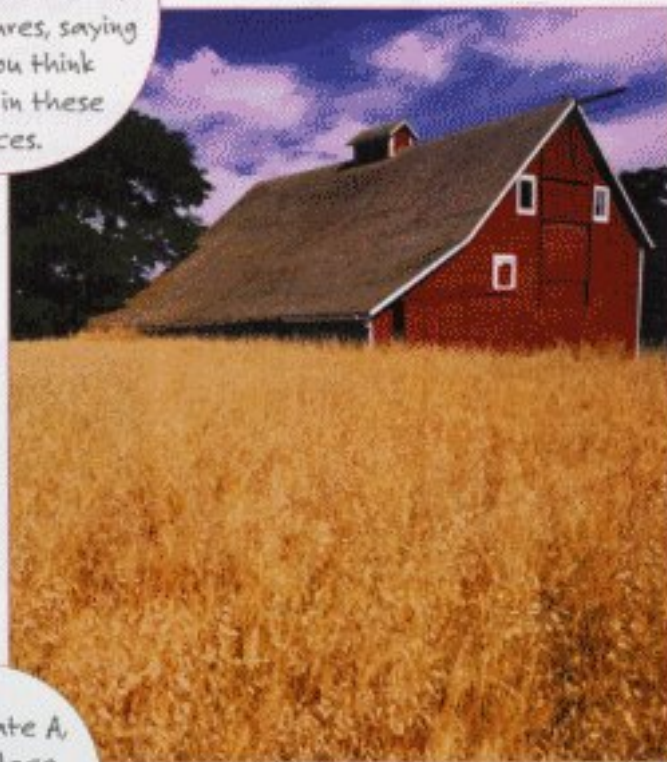
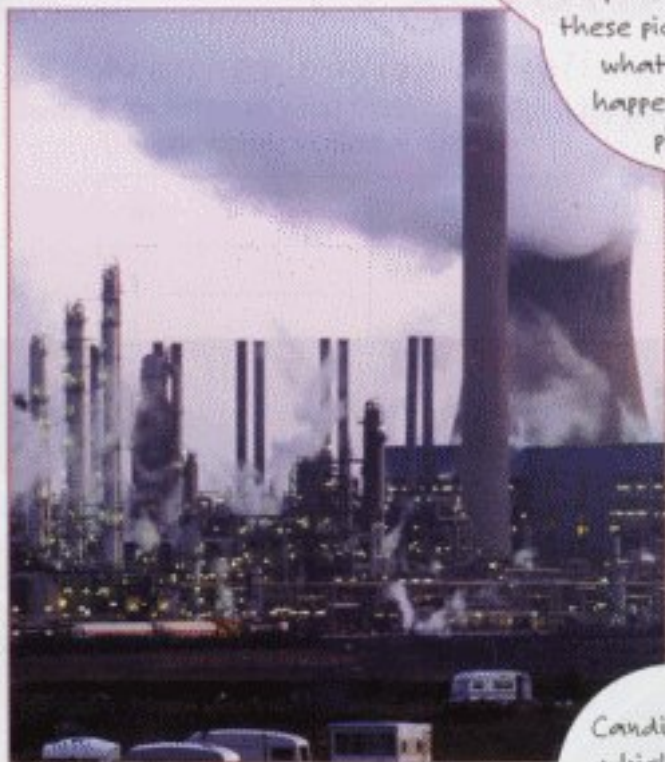


Photos for Candidate B:



1-3

Candidate B,  
I'd like you to  
compare and contrast  
these pictures, saying  
what you think  
happens in these  
places.



Candidate A,  
which place  
would you prefer  
to work in?



4-6

## Grammar focus

Read the following sentences and choose the correct paraphrase in each case.

- 1 You **must** find it noisy living in a city.
  - a I think you probably find living in a city noisy. (*deduction*)
  - b I really want you to find it noisy living in a city. (*obligation*)
- 2 You **must** make more of an effort to recycle.
  - a I think you probably make more of an effort to recycle. (*deduction*)
  - b I really want you to make more of an effort to recycle. (*obligation*)

Rewrite the following sentences using the words in bold and the word 'must'.  
Write between two and five words. Do not change the word given.

- 1 Because there is a lot of pollution, I think the man in the photo feels depressed.  
**feel**  
The man in the photo \_\_\_\_\_ there is so much pollution.
- 2 The local council is responsible for making sure that the beaches are clean.  
**make**  
The local council \_\_\_\_\_ that the beaches are clean.
- 3 Judging by all the pollution, I think this is a photo of an industrial area.  
**of**  
This photo \_\_\_\_\_ an industrial area, judging by all the pollution.
- 4 The photographer probably took this photograph in a wood or forest.  
**have**  
This photograph \_\_\_\_\_ in a wood or forest.

